


## 93m<sup>2</sup> Office for Sale in Limassol - Petrou kai Pavlou

A contemporary business center in Petrou Kai Pavlou, Limassol, designed to accommodate modern commercial operations in a strategic and well-connected urban location. 

The project comprises seven self-contained commercial units distributed across four levels, including two ground-floor retail shops with mezzanines, four full-floor office spaces, and one penthouse office with private terraces. The development offers approximately 759 m<sup>2</sup> of total sellable area (GEA), complemented by an additional ~300 m<sup>2</sup> basement area.

Designed with modern technical specifications, energy-efficient systems, and flexible acquisition options, the project is suitable for both owner-occupiers and ...

### Property Info

Covered Area	<b>93</b>
Covered Veranda	<b>10</b>
Floor Number	<b>2</b>
Total Number of Floors	<b>3</b>

### Plot / Area Info

Parking **Covered, Yes**

### Additional info

Reference Number	<b>13768</b>
Property type	<b>Office</b>
Condition	<b>Under Construction</b>

### Amenities

- Parking

### Location

**Location:** Limassol - Petrou kai Pavlou      Region: **Limassol**  
**Coordinates:** **34.68710154 / 33.02729486**

## Price: €485 000 + VAT

VAT for this property is **€24,250** or **€92,150**. VAT usually is 19%. If it is your first purchase of property, you can have VAT reduced to 5% for the first 150sq.m. of the property.

VAT	<b>Excluded</b>	Title transfer fee	<b>None</b>	Common expenses	<b>None</b>
		Price per SQM	<b>€5 215.00/m<sup>2</sup></b>		

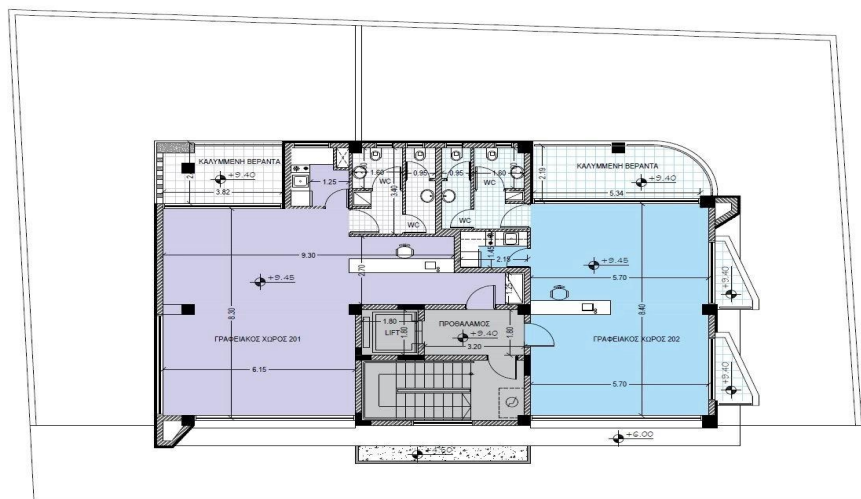
## Representative: RealDeal Estates

Registration number	<b>1311</b>	Email	<b>info@realdeal.cy</b>
License number	<b>347/E</b>	Legal name	<b>Esperia Estates (Limassol-Paphos) Limited</b>
Phone: <b>+35725255505, +35794001333</b>			

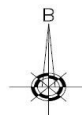
## Price change history

€485 000 on May 21, 2026





ΚΑΤΩΦΗ 2ου ΟΡΟΦΟΥ



ΚΑΤΩΦΗ ΥΠΟΓΕΙΟΥ

