


156m² Office for Sale in Limassol - Petrou kai Pavlou

A contemporary business center in Petrou Kai Pavlou, Limassol, designed to accommodate modern commercial operations in a strategic and well-connected urban location. 

The project comprises seven self-contained commercial units distributed across four levels, including two ground-floor retail shops with mezzanines, four full-floor office spaces, and one penthouse office with private terraces. The development offers approximately 759 m² of total sellable area (GEA), complemented by an additional ~300 m² basement area.

Designed with modern technical specifications, energy-efficient systems, and flexible acquisition options, the project is suitable for both owner-occupiers and ...

Property Info

Covered Area	156
Covered Veranda	41
Floor Number	3
Total Number of Floors	3
Energy Efficiency	A

Plot / Area Info

Additional info

Reference Number	13770
Property type	Office
Condition	Under Construction

Amenities

Location

Location: Limassol - Petrou kai Pavlou Region: **Limassol**
Coordinates: **34.68710154 / 33.02729486**

Price: €695 000 + VAT

VAT for this property is **€38,492** or **€132,050**. VAT usually is 19%. If it is your first purchase of property, you can have VAT reduced to 5% for the first 150sq.m. of the property.

VAT	Excluded	Title transfer fee	None	Common expenses	None
		Price per SQM	€4 455.00/m²		

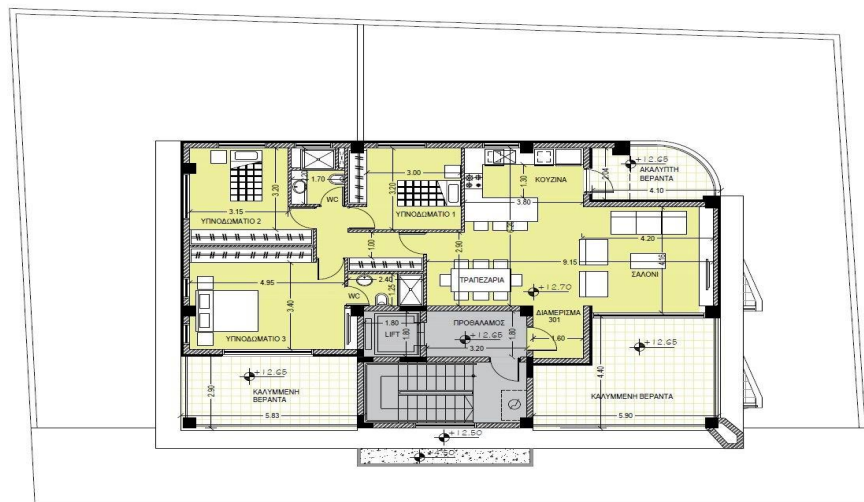
Representative: RealDeal Estates

Registration number	1311	Email	info@realdeal.cy
License number	347/E	Legal name	Esperia Estates (Limassol-Paphos) Limited
Phone:	+35725255505, +35794001333		

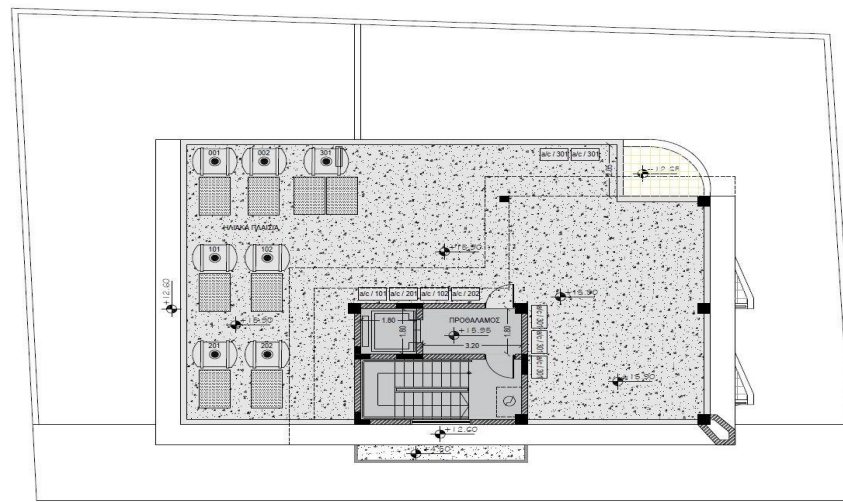
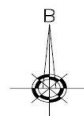
Price change history

€695 000 on May 21, 2026

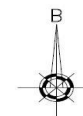


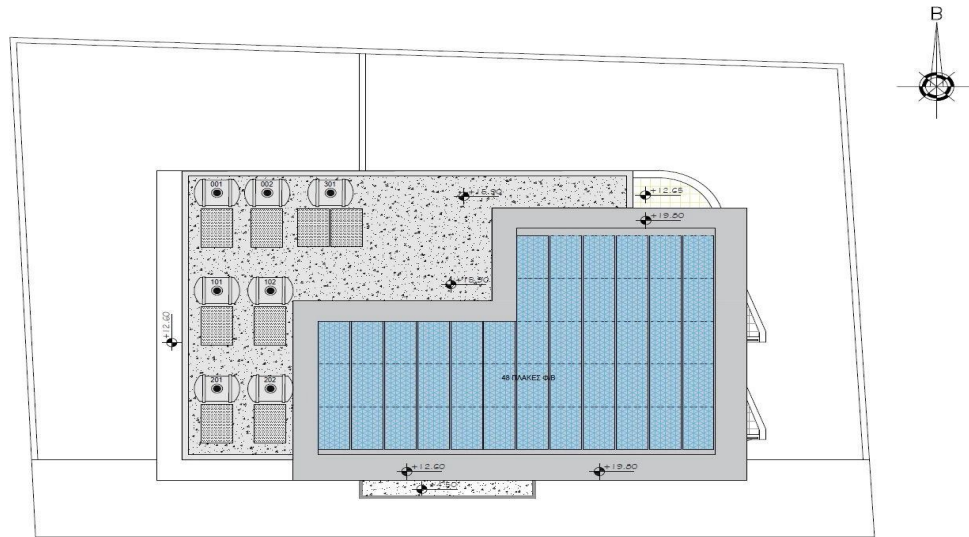


ΚΑΤΩΦΗ 3ου ΟΡΟΦΟΥ



ΚΑΤΩΦΗ ΟΡΟΦΗΣ





ΚΑΤΩΨΗ ΟΡΟΦΗΣ